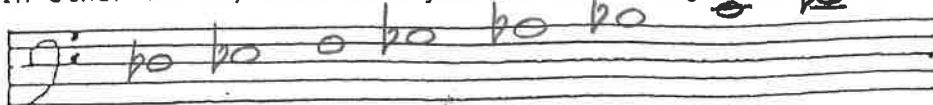


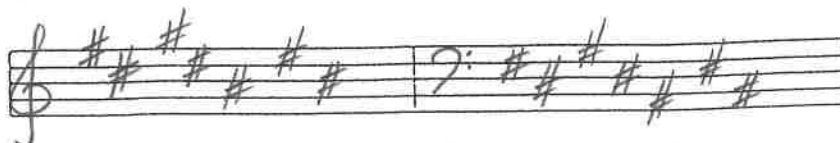
Name: KEY

1) What is the pattern of tones and semitones in a major scale? T T S T T T S

Write a scale starting on D^b using the tone-semitone pattern. In other words, this time you are not using a key signature.



2) Write all the sharps on the staff in both clefs.



Write all the flats on the staff in both clefs.



3) Write the following major scales in the given clef. Use key signatures.

Name: KEY

4) Identify the following keys:

Handwritten musical notation for five keys, each on a staff with its key signature and a single note:

- Staff 1: A major (A+)
- Staff 2: D-flat major (D^b+)
- Staff 3: A-flat major (A^b+)
- Staff 4: B major (B+)
- Staff 5: F major (F+)

5) Match up the given keys with their correct key signature.

<u>Major Key</u>	<u>Key Signature</u>
ex. G (d)	a) three sharps
B ^b (i)	b) six flats
D ^b (g)	c) one flat
F (c)	d) one sharp
A (a)	e) three flats
E (f)	f) four sharps
G ^b (b)	g) five flats
B (h)	h) five sharps
E ^b (e)	i) two flats