

# KEY

## AMV4M1 EXAM PRACTICE

1. When you sing and tense the walls of the throat, the saliva ducts are lungs.
2. The part of the larynx which vibrates and produces sound. Vocal Folds
3. When you drink water it takes about 20 min. minutes to wet your throat.
4. A note which has the value of 3 beats in 6/8 time. dotted quarter note
5. A tempo marking which means quick. allegro
6. The interval which describes Do to Fa. P4
7. The interval which describes Do to Mi. +3
8. There is nothing more powerful than your opinion of yourself
9. The single most important muscle used in breathing. diaphragm
10. Muscles have memory.
11. The Major key signature which has 3 flats. A+
12. The minor key signature which has 1 sharp. E-
13. A tempo marking which means slow adagio
14. A note which has the value of 1/2 beat in 4/4 time. eighth note
15. Think of any piece you know and "play" it in your head. Where in the brain is this music playing? temporal Lob
16. 'Chills of euphoria' when listening to music are related to the same reward systems in the brain that are stimulated by food, addictive drugs, sex.

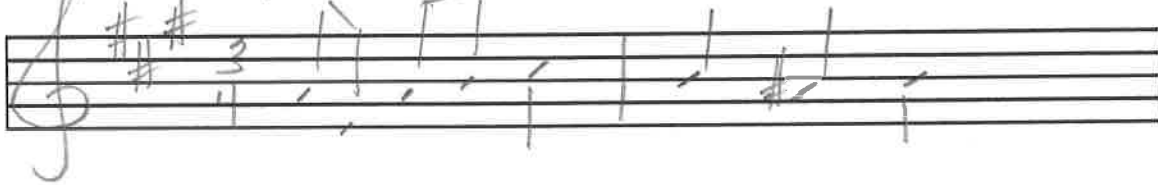
Basso Continuo	Melismatic	Harpsichord	Harmony	Introduction of Opera
Sonata Allegro	Rebirth	Minstrel	Impressionism	Improvisation
Serial Music	Discordant	Atonal	Madrigal	Troubadours

ANTIQUITY/MIDDLE AGES	RENAISSANCE	BAROQUE
Melismatic	Rebirth Minstrel Harmony Madrigal Troubadours	Harpsichord Harmony Introduction of Opera Improvisation
CLASSICAL	ROMANTIC	MODERN
Sonata Allegro Harmony	Harmony Discordant	Serial Music Discordant Atonal Harmony Impressionism Improvisation.

The key of this excerpt is D+. (5 marks)

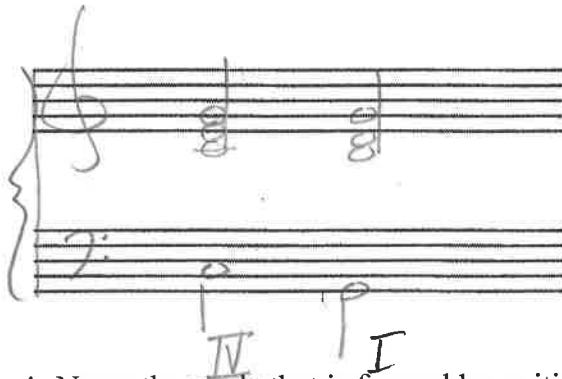


Transpose this melody **down a perfect fourth** to **A-major**. Add the clef, key, and time signature.



Fill in the blanks.

- a) A perfect authentic cadence uses this chord progression: V-I.
- b) A cadence that features the chords IV - I is called a Plagal cadence.
- c) This cadence is sometimes called the "Amen" cadence. Plagal.
- d) Write an "Amen" cadence in the key of G major in the space provided.



4. Name the mode that is formed by writing a major scale in the following manner:: (7 marks)

- i) starting on the first note: Ionian.
- ii) starting on the second note: dorian.
- iii) starting on the third note: phrygian.
- iv) starting on the fourth note: lydian.
- v) starting on the fifth note: mixolydian.
- vi) starting on the sixth note: aeolian.
- vii) starting on the seventh note: locrian.

Indicate what quality of triad (major minor, diminished, augmented) is being described in each of the following:

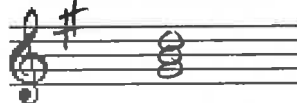
- a) A triad with a major third on the bottom, and an augmented fifth as an outer interval: augmented
- b) A triad built on the sixth note of a major scale: minor
- c) A triad with an outer interval of a perfect fifth, and a minor third on the bottom: minor
- d) mediant triad in a major key: minor
- e) a triad built on the fourth note of a major scale: major
- f) a triad with a diminished fifth as an outer interval, and a minor third on the bottom: diminished
- g) A leading-tone triad in a major key: diminished

6. Write the triads requested. Use the proper key signatures. (6 marks)

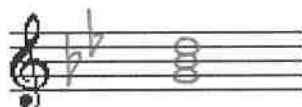
IV chord in D major



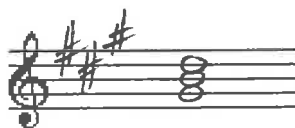
iii chord in E minor



i chord in G minor



vii chord in A major



Take the following short score, and show it in *modern vocal score* format. Be sure to use the proper clefs, key and time signatures, and write the names of the voices before each staff:

A short score for piano and voice. The piano part is written on two staves (treble and bass clefs) in 3/8 time, with a key signature of two sharps (D major). The vocal part is written on a single staff in treble clef, also in 3/8 time and D major. The piano accompaniment consists of a series of chords and moving lines in both hands. The vocal line consists of a few notes, including a dotted quarter note and an eighth note.

A handwritten modern vocal score for four voices. It consists of four staves, each with a different clef: Soprano (treble), Alto (treble), Tenor (treble), and Bass (bass). The key signature is two sharps (D major) and the time signature is 3/8. The notation is handwritten and shows the vocal lines for each voice part, with some notes and rests clearly visible.