

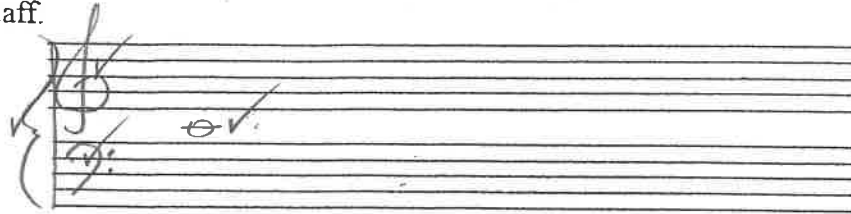
Name: KEY

NOTATION - END OF UNIT TEST

UNIT ONE

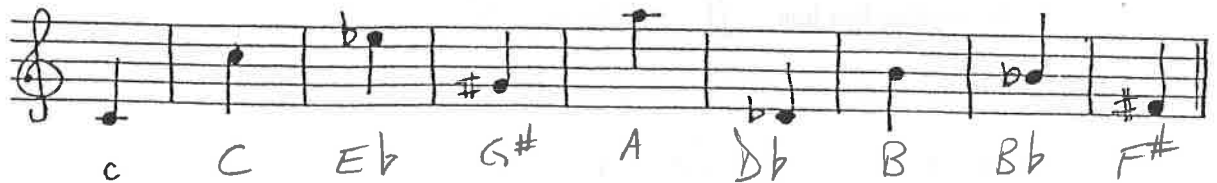
- 1) Set up the following staves for piano music. Remember the bracket. Then write middle C in on each staff.

4



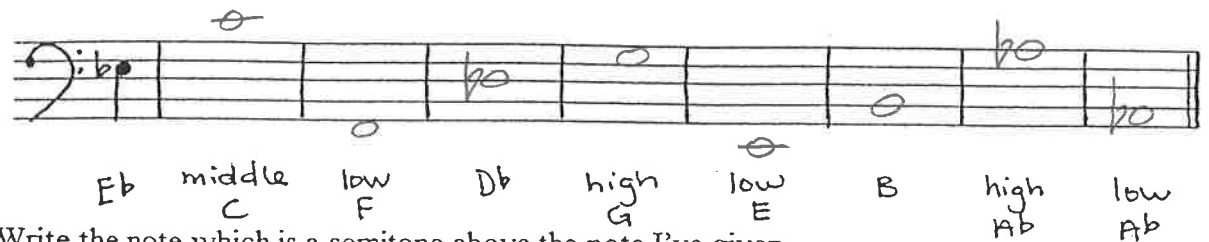
- 2) Identify these notes. The first is done for you.

8



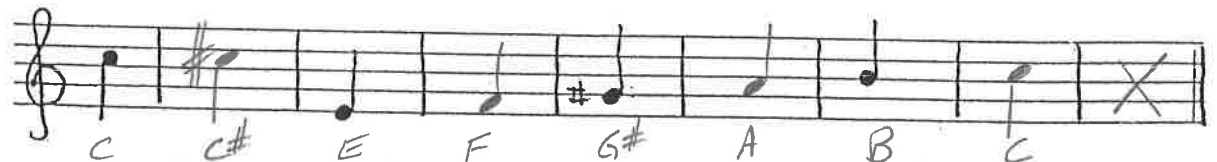
- Write the following note names on the staff. The first is done for you.

8

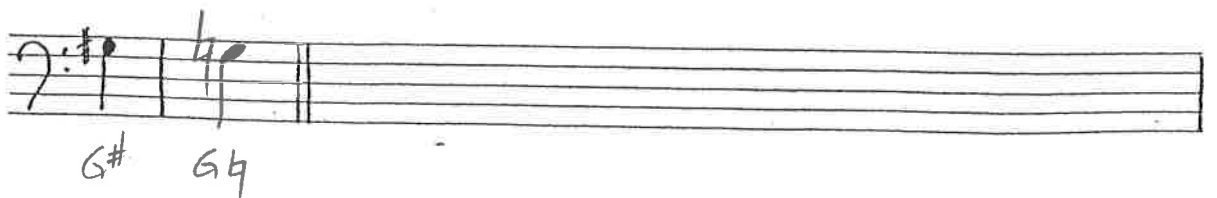
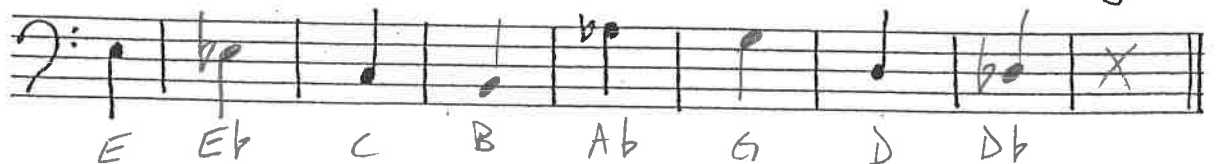


- 3) Write the note which is a semitone above the note I've given.

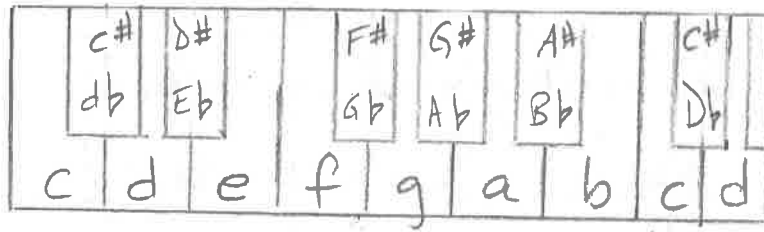
9



Write the note which is a semitone below the note given



4 4) Draw a piano keyboard. Label each white note once and each black note twice.



7 5) Define each of the following terms:

- a) whole tone two semitones or two half steps
- b) double bar line || shows the end of the piece
- c) bass clef also known as the F-clef. → or left hand.
- d) staff made of five lines and four spaces
- e) grand staff the treble and bass clef combined with a bracket.
- f) ledger lines short lines that extend notes beyond the staff.
- g) flat b - lowers the note by  $\frac{1}{2}$  a pitch or semitone.